

## 13\_10 NCDOT RDU Plot Control Data Cell

### Question:

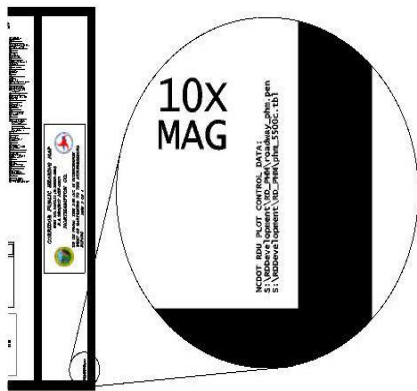
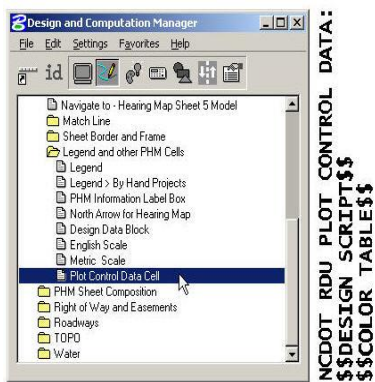
Why are my color maps not being plotted out consistently the same? Recently, the colors are different from the last set plotted.

### Answer:

There are numerous reasons why color maps are not plotted consistently in Roadway Design.

- Some color maps require a customized Project specific design script (pen table) because of the ever changing preferences and non-standardized practices. The existence and location of this design script is not known if the request form was not filled out correctly.
- The testing and migration to a different color plotters (old HP 5500 to new HP 1100 to T1100c).
- There are three types of color maps; Public Hearing Map, Corridor Map, and Merger Meeting Map.
- Color maps can either be in DGN or PDF format.
- A dedicated design script (pen table) is needed for each map type and map format (six total)
- A dedicated color table is used for certain type of color map.
- Plotter used, Roadway or Photogrammetry.
- The Hearing Map D&C Manager was not used.
- Request for color plots not being filled out correctly on the request form.
- The limitations of iPlot raster resolution and Adobe Acrobat PDF paper size.

To resolve some of these issues, place a **Plot Control Data Cell** on the lower right corner of your color map.



The design script and color table information will be stamped to the hard-copy. This information is important to us, in our ability to provide a more consistent color plot for you.